

## *Cross Country Weavers*

NAME Leslie Killeen  
ADDRESS PO Box 2508  
Durham, NC 27715  
PHONE 919-490-6335

FAX  
Email lkilleen@compuserve.com  
LOOM Schact Baby Wolf with comby  
DESIGN SOFTWARE Fiberworks PCW  
(if applicable)

WEAVE STRUCTURE/TECHNIQUE  
Deflected Double Weave

SOURCE Madelyn Van der Hoogt's articles and workshop notes

PROJECT CCW Samples- "Double Trouble"  
FABRIC USE Clothing



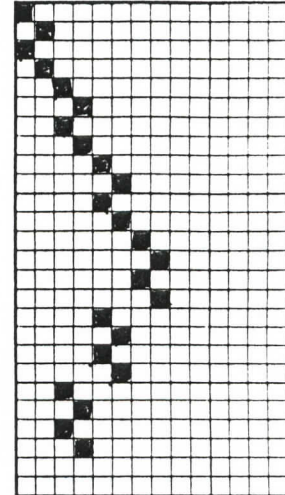
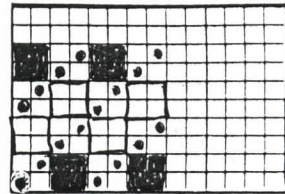
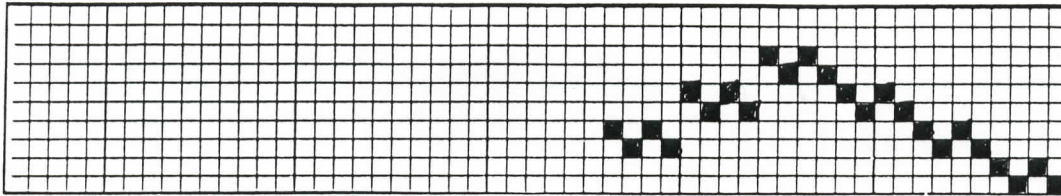
# Cross Country Weavers

NAME Leslie Killeen  
THREADING DRAFT

DATE March 2002

Rising   
Sinking  
CounterMarch

TIE-UP:



WARP: Size 10/2  
Fiber Pearl Cotton  
Color Purple and Plum  
Source Halcyon  
WEFT: Size 10/2  
Fiber Pearl Cotton  
Color Purple and Plum  
Source Halcyon

WARP and WEFT SEQUENCE: (if applicable) 4 purple, 4 plum, in both warp and weft

REED 15 dent      SETT 30      epi SLEY 2      epd  
ENDS/repeat 24      Ends to Balance

FINISHING DETAILS Machine washed on gentle cycle, dried in dryer

SHRINKAGE Warp 7%, weft 9%

## COMMENTS of INTEREST

With DW on the agenda, I decided to explore once again Deflected Double Weave (DDW). In a study group discussion last year, some felt this tie-up may in fact not really be Deflected Double Weave--which leaves it to be --maybe just "Double Trouble" or "False" Deflected Double Weave. My approach---a non-structure type person--if I like what I see, I try to understand how it is achieved and leave to the structure people its naming. In DDW warp (black blocks) or weft floats (unfilled blocks) are created in the blocks surrounding the twill lines. With the two faces, this structure lends itself to clothing fabric. I have included Madelyn Van der Hoogt's simple diagram comparing DW and DDW.

## PERSONAL DESIGN INSPIRATION

Of the many tie-ups I used in a DDW sampler, this was a favorite. So I picked a color combination that is also a favorite to weave the samples for this year.