

Cross Country Weavers

NAME Leslie Killeen
ADDRESS PO Box 2508
Durham, NC 27715
PHONE 919-490-6335
FAX
Email lkilleen@pughkilleen.com
Date March 2009
LOOM Schacht Baby Wolf with comby
DESIGN SOFTWARE Fiberworks PCW
(if applicable)

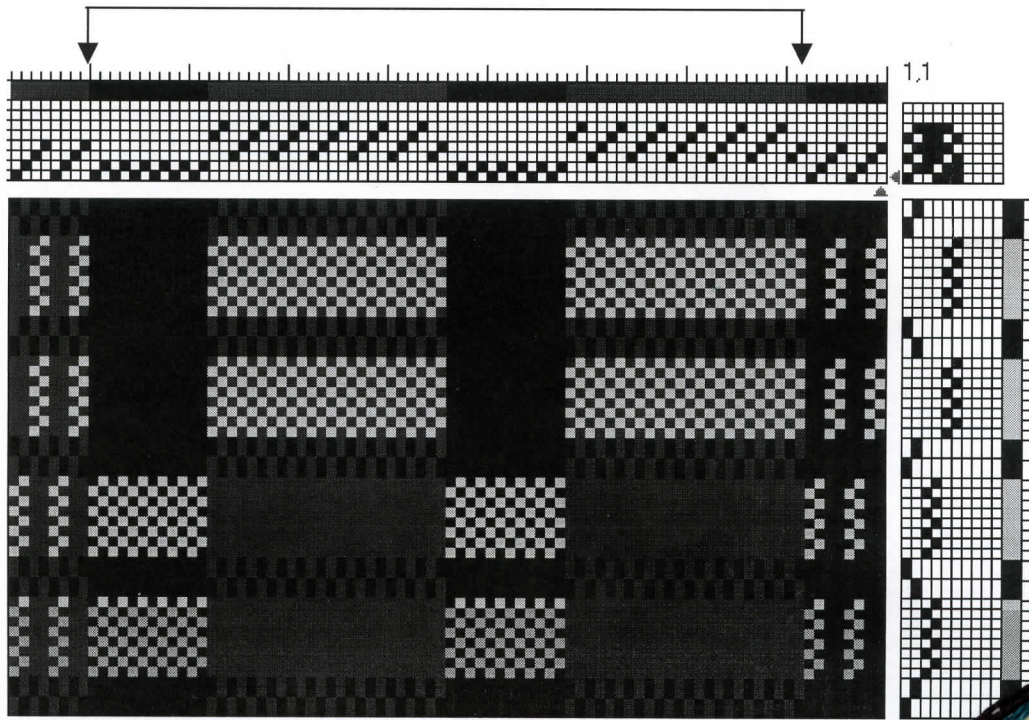
WEAVE STRUCTURE/TECHNIQUE
Honeycomb

SOURCE inspired by sample by Dorothy Beck
The Weavers' Guild of Boston samples 7/90
PROJECT Iridescence "Dragon Flies"

FABRIC USE samples and lined clothing fabric
Date: March 2009



Repeated across warp



WARP: Size 8/2
Fiber Tencel
Color Black and Teal
Source Webbs

WEFT: Size 8/2
Fiber Tencel (used single or doubled on treadle 1 and 2)
Color Lemongrass
Source Webbs

WARP and WEFT SEQUENCE: (if applicable) on shafts 1 and 2 black, on shafts 3,4,5,6 teal)

REED 15 SETT 30 epi SLEY 2 dpd
ENDS/repeat 36 Ends to Balance

FINISHING DETAILS Washed gently, aired dried, and then in dryer briefly, pressed

SHRINKAGE Weft 0%, warp 2-3%

COMMENTS of INTEREST

PERSONAL DESIGN INSPIRATION

Iridescence has always fascinated me, especially in butterflies, though the mechanism is different. The starting point for the structure was from a sample in my files by Dorothy Beck's (July '90), of a Monksbelt treadled as honeycomb. I spread the warp on 6 shafts. The color inspirations came from butterflies, though while weaving the motif looked more like dragon flies. It is mid March, warp is on the loom, weaving almost completed and if the washing/finishing goes well, I will be thrilled with no time to spare. I am between trips, just returning from a month in India and heading to China, both places having lots of opportunities to see iridescence fabrics. Well, as I was finishing up the weaving, two threading errors popped out, naturally right in the center. With time running out, I will just call them design elements!!! The tencel fiber gives a very drapeable and soft fabric. The long floats on the back, shorter ones on the front will add to the challenge of using the fabric. Keep tuned!