

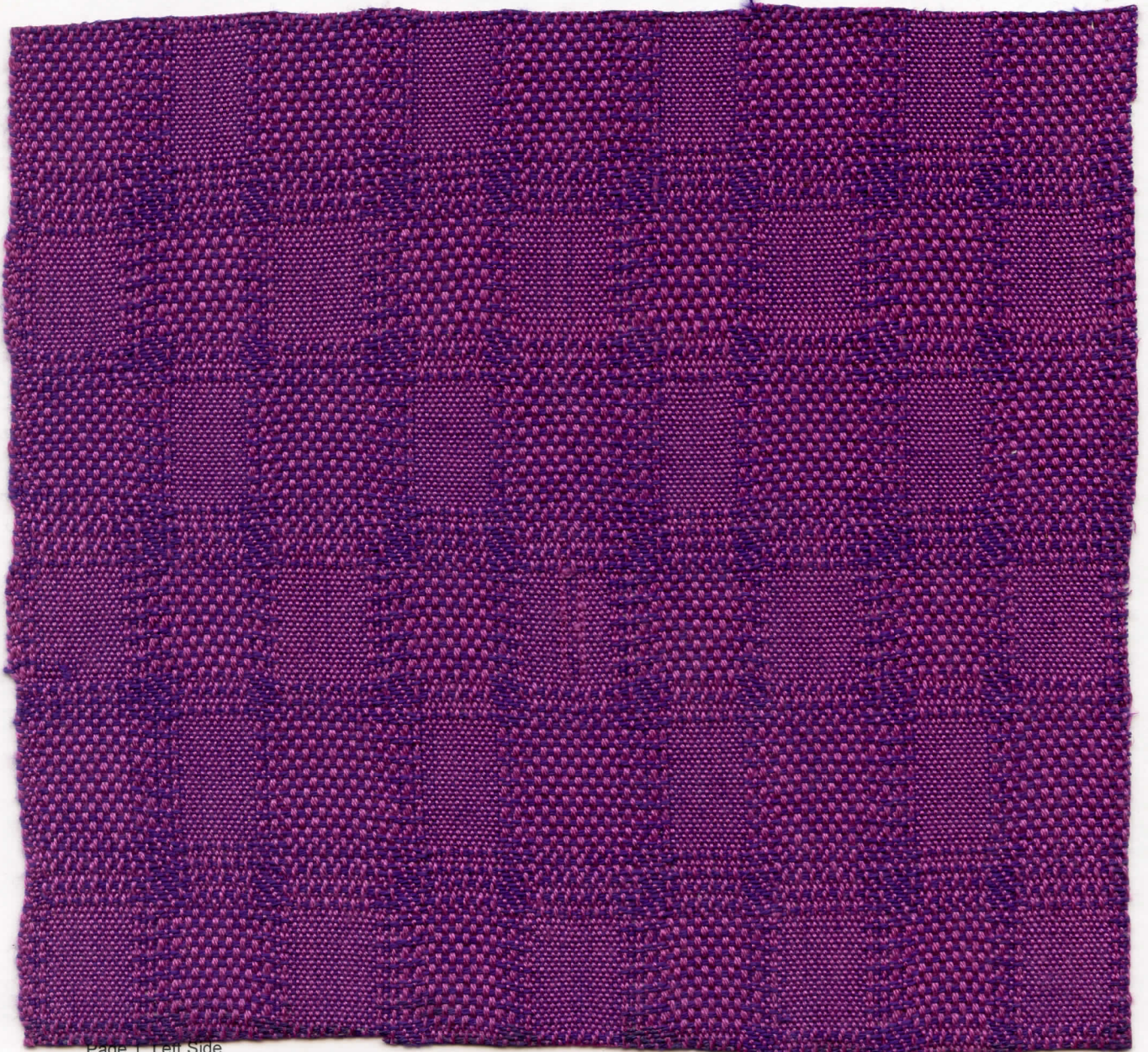
## *Cross Country Weavers*

NAME Leslie Killeen  
ADDRESS PO Box 2508  
Durham, NC 27715  
PHONE 919-490-6335  
Email lkilleen@pughkilleen.com  
Date March 2015  
LOOM Schacht Baby Wolf with comby  
DESIGN SOFTWARE Fiberworks PCW  
(if applicable)

WEAVE STRUCTURE/TECHNIQUE  
Network Draft - basket weave plain weave

SOURCE my own  
PROJECT Basket Weave +1

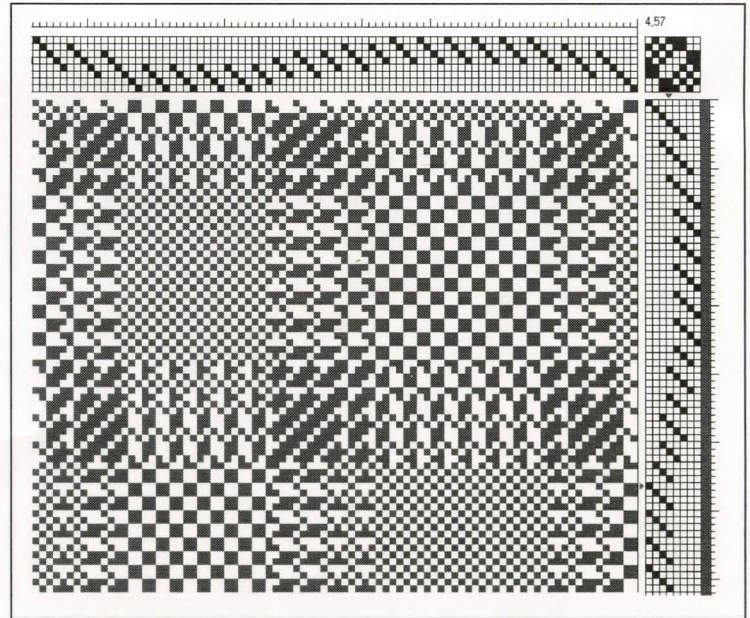
FABRIC USE samples and clothing



WARP: Size 20/2's  
Fiber Cotton  
Color Raspberry  
Source Stash

WEFT: Size 20/2's  
Fiber Cotton  
Color Plum  
Source Stash

WARP and WEFT SEQUENCE: (if applicable)



REED 15      SETT 45      epi      SLEY 3      epd  
ENDS/repeat 72      Ends to Balance

#### FINISHING DETAILS

Washed on gentle cycle, spun dried, hung to further dry, and lightly pressed with iron.

SHRINKAGE width 2% length 3%

#### COMMENTS of INTEREST

Basket Weave is not a structure that grabbed me, so I first went to the books to refresh my understanding of it. I had just returned from the CW Conference. One of the seminars by Alice Schlein was Network Drafting the next generation. Once home, this inspired me to write an article on my first introduction back in the 90's to network drafting. I remembered also an article in which Alice had designed a table runner using network drafting with basket weave along the selvages. It was a 16 shaft design using 12 for the network part and 4 for the basket weave. On 8, just having 4 left for the network wasn't going to work. So maybe a tie-up with basket weave would work. As it turned out I had actually done this back in the 90's so am going down memory lane with these samples, even repeating the thread size and color. Since our topic was Basket Weave + 1, decided I was still fulfilling the requirements (I Hope!), putting Basket Weave in the tie up.

PERSONAL DESIGN INSPIRATION – Down memory lane!