

# *Cross Country Weavers*

NAME Leslie Killeen

ADDRESS PO Box 2508

Durham, NC 27715

PHONE 919-490-6335

FAX

Email lkilleen@pughkilleen.com

Date March 2017

LOOM Schacht Baby Wolf with comby

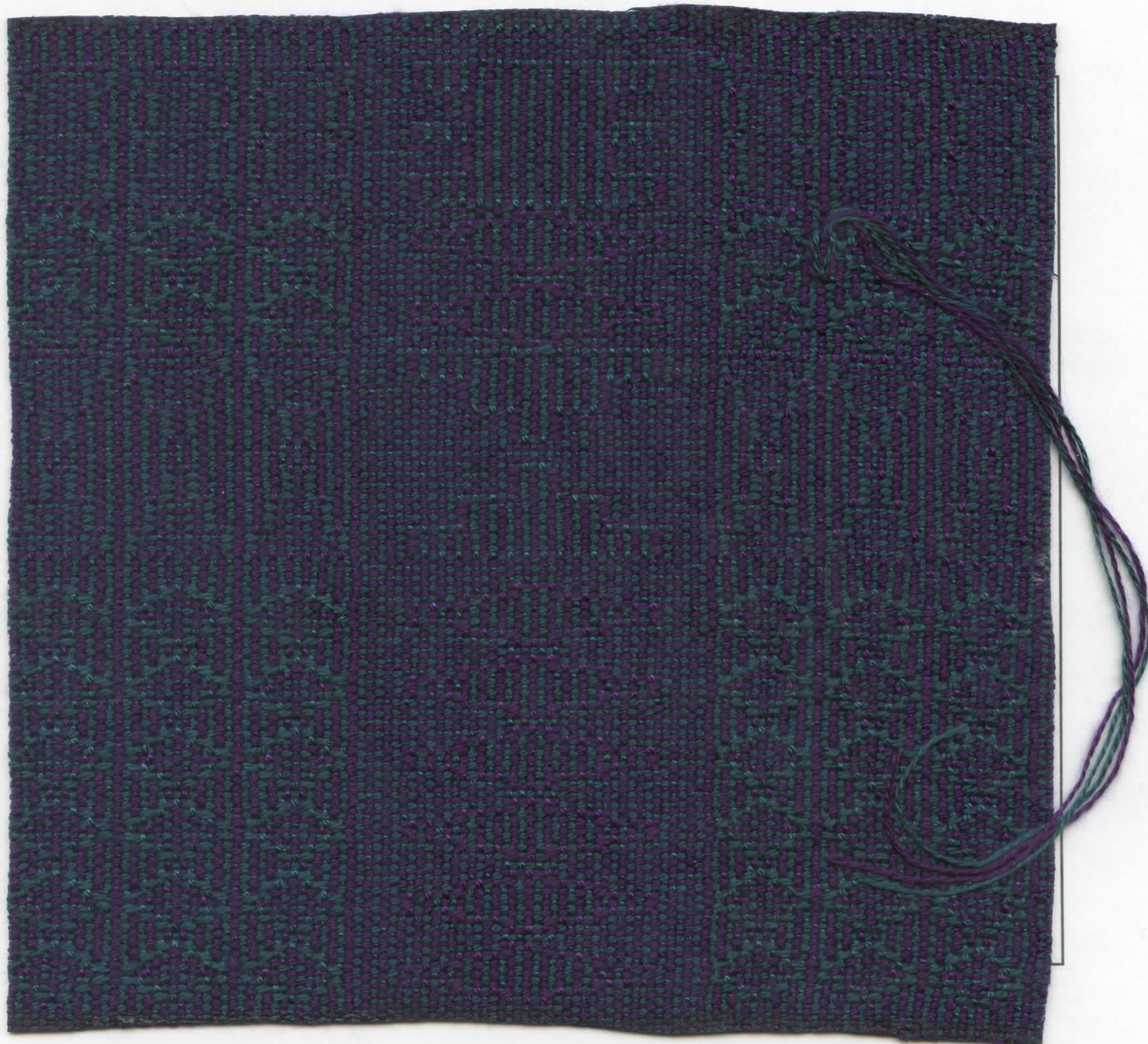
DESIGN SOFTWARE Fiberworks PCW

WEAVE STRUCTURE/TECHNIQUE Shadow Weave

SOURCE Starting off point "Shadow-Weave Scarves" Nancy Rovin *Weaver's Spring 1999* page 48

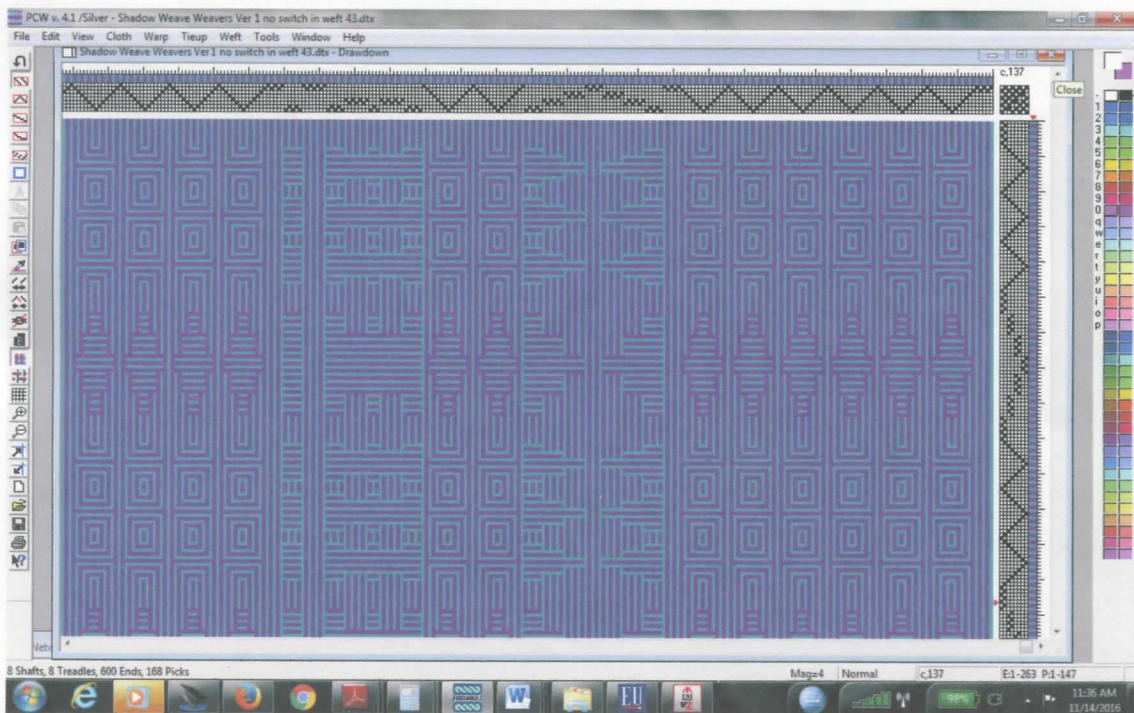
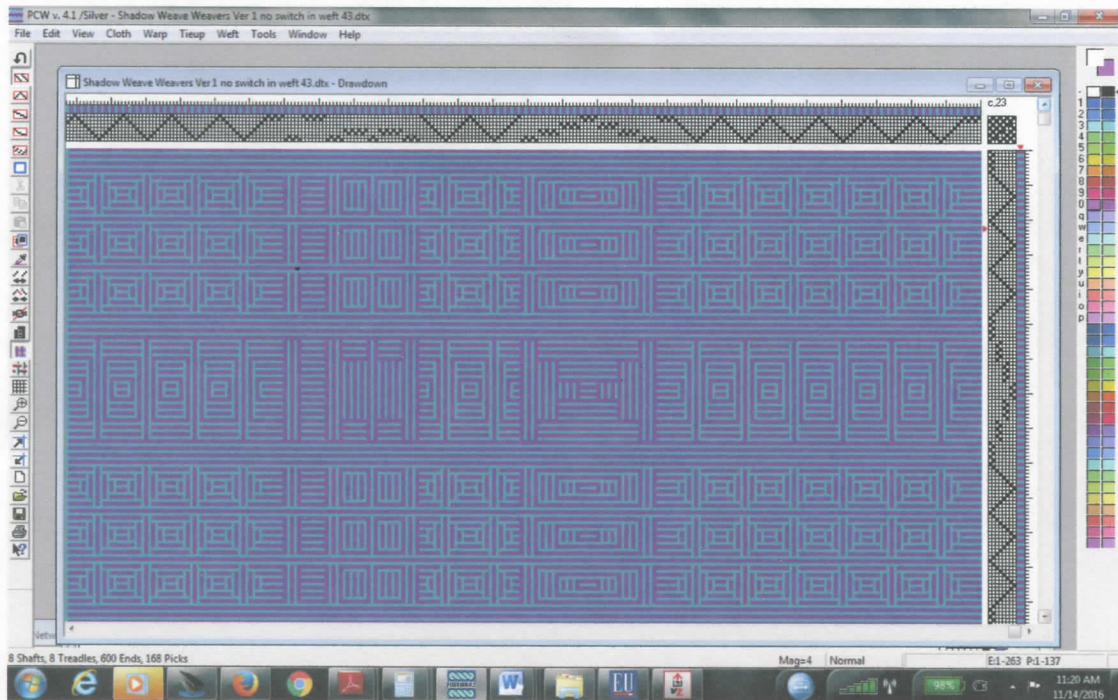
PROJECT 60<sup>th</sup> Anniversary for CCW Diamonds

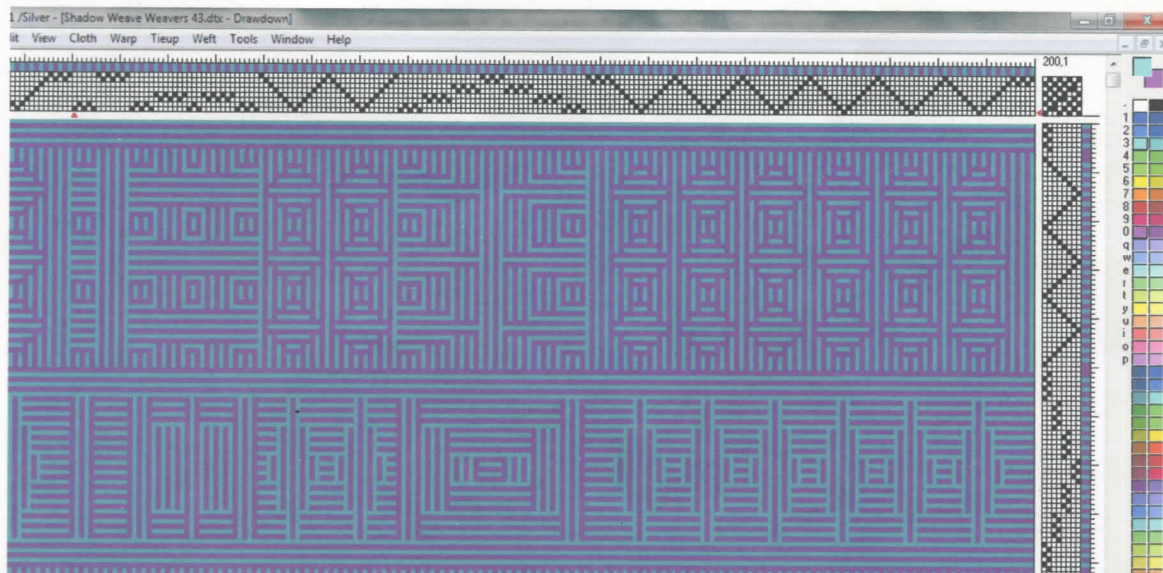
FABRIC USE samples





Design can be changed, by switching the order of colors in the weft, purple on odd pics, green on even pics throughout and second design purple on even pics, green on odd pics throughout, with the color order in the warp unchanged.





Green used to start odd # **warps** and odd # **wefts** with **weft** color switching at start and end of each 1-8-1-8-1-8-1 sequence.

**WARP:** Size 8/2

Fiber Tencel

Color Green indicated as light grey and Purple as dark grey (in a black and white print out)

Source Halcyon

**WEFT:** Size 8/2

Fiber Tencel

Color Green indicated as light grey and Purple as dark grey (in a black and white print out)

Source Halcyon

**WARP and WEFT SEQUENCE:** (if applicable) warp alternate purple/green; weft alternate except where switch is indicated

REED 15 SETT 30 epi SLEY 2 dpd  
ENDS/repeat Ends to Balance

#### FINISHING DETAILS

Washed on gentle cycle, spun dried, hung to further dry, and lightly pressed with iron.

SHRINKAGE \_5%\_ width \_5%\_ length

#### COMMENTS of INTEREST

A tip picked up from the *Weaver's* article: When weaving with a computer-aided dobby, add a blank pick when there is a color change i.e. dk/light to light/dk. It does take you by surprise pushing down the peddle and no shafts rise, but it is a good reminder for the color change.

#### PERSONAL DESIGN INSPIRATION

Though knowing points in the threading and treadling would provide diamonds, I decided to look back through 16 years of samples and see what diamond motifs popped out that might provide some inspirations for this year's samples. I was not disappointed and lots more ideas are brewing. But I had also gotten Barbara Walker's book *Supplementary Warp Patterning* and thought maybe this was the time I should try a supplementary warp, something which has been on my to do list for years... In the back section of her book, she mentioned a yarn-painted scarf without the trouble of dyeing, by superimposing a networked or advancing twill as a supplementary pattern warp on a plain-weave ground (*Weaver's* Spring 1999, page 46). Anything with a networked motif draws me in. So I plugged it into PCW with visions of getting the diamonds in the weft treadling. Again it is still brewing! For I turned the page and saw *Shadow-Weave Scarves* by Nancy Rovin, a color and weave project with diamonds (*Weaver's* Spring 1999 page 48). This turned out to be my starting point for these samples. It was fun ride. More contrast in the colors selected might have been a better choice, so the diamonds are subtle. I also played with 6's..600 ends, 6 diamonds, couldn't quite use the number 60.