

Cross Country Weavers

NAME Leslie Killeen
ADDRESS PO Box 2508
Durham, NC 27715
PHONE 919-490-6335
Email lkilleen@pughkilleen.com
Date March 2020
LOOM Schacht Baby Wolf with comby
DESIGN SOFTWARE Fiberworks PCW

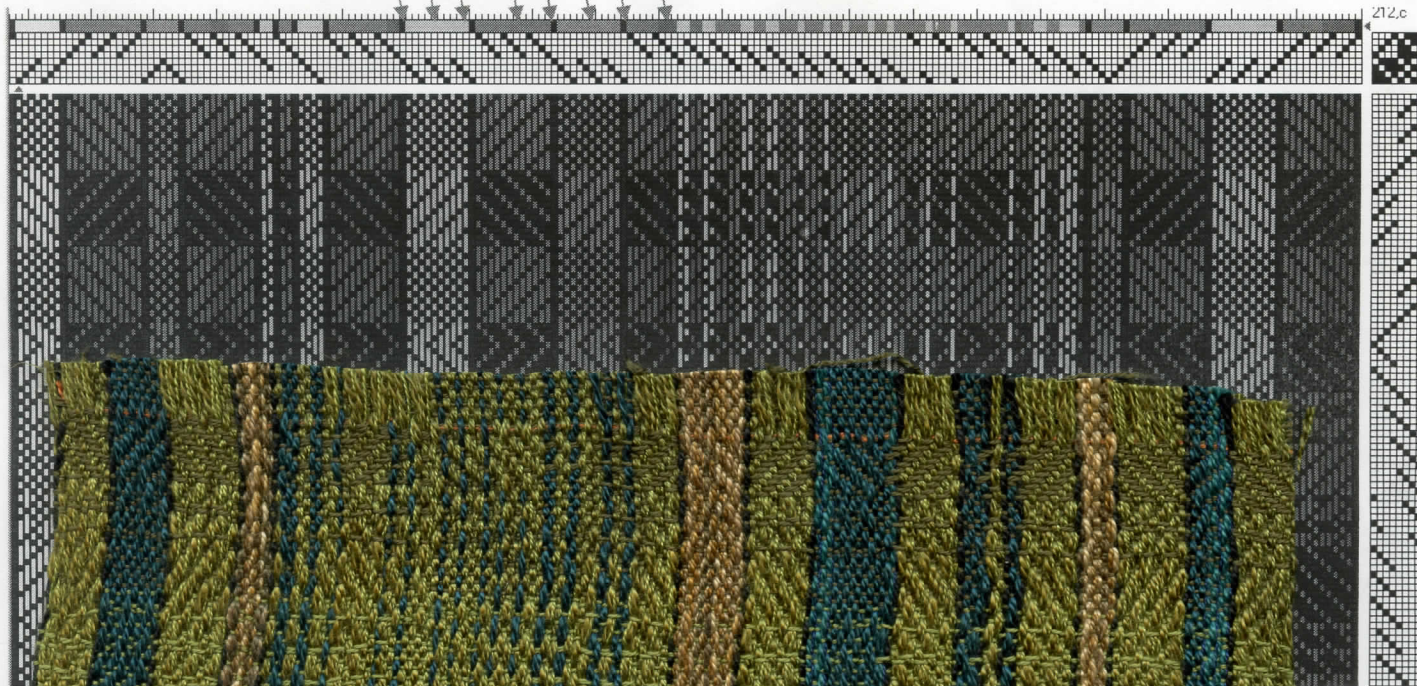
WEAVE STRUCTURE/TECHNIQUE
Twill and network

SOURCE Original
PROJECT Birds, Bugs and Butterflies

FABRIC USE CC Samples, Yardage, Clothing

Bk Bl Bk Gr Bk Tan Bk Gr

Bk = black / Bl = blue / Gr = Green T = Tan



Cross Country Weavers

NAME Leslie Killeen
ADDRESS PO Box 2508
Durham, NC 27715
PHONE 919-490-6335
Email lkilleen@pughkilleen.com
Date March 2020
LOOM Schacht Baby Wolf with comby
DESIGN SOFTWARE Fiberworks PCW

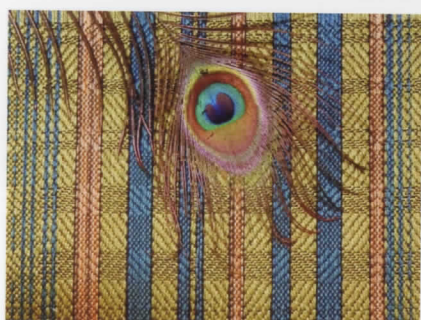
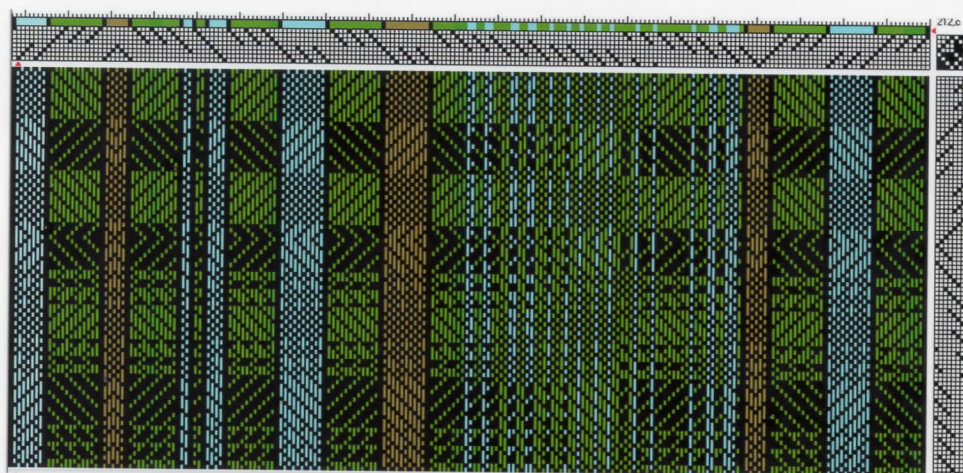
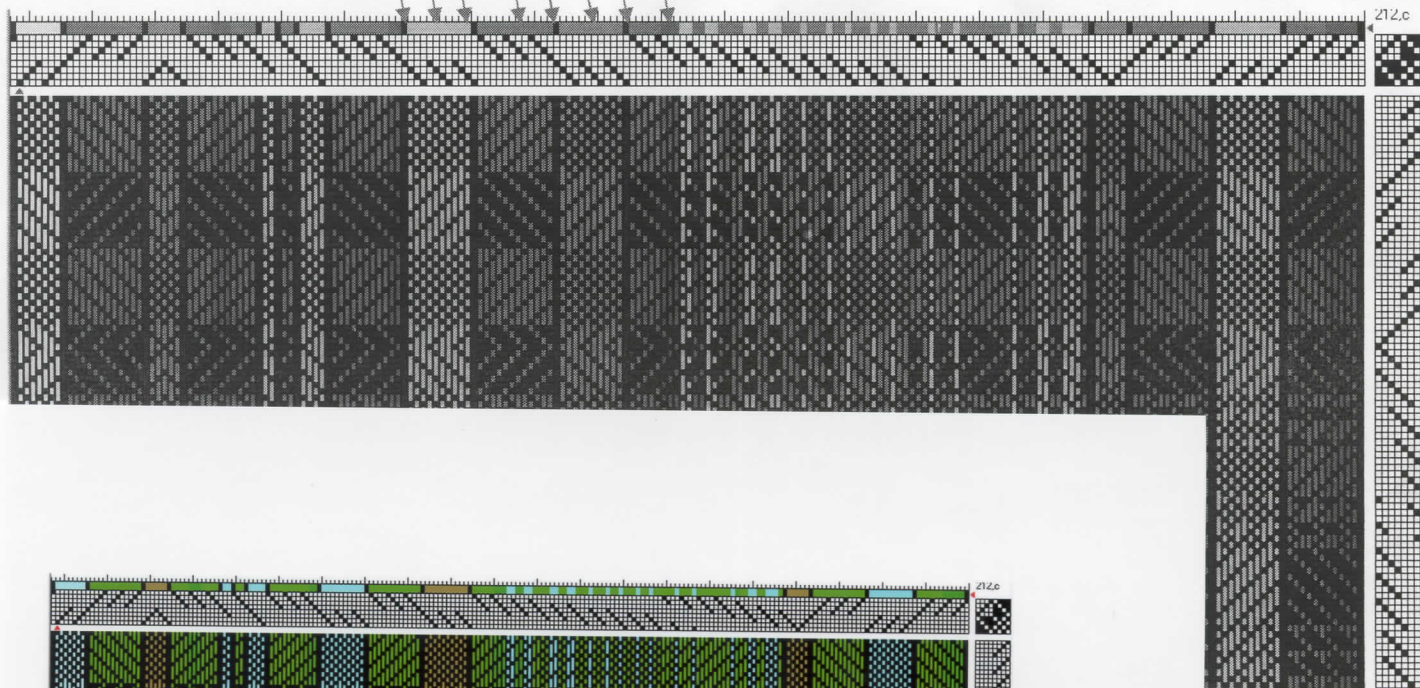
WEAVE STRUCTURE/TECHNIQUE
Twill and network

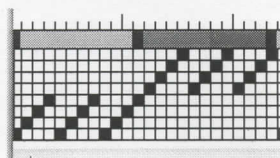
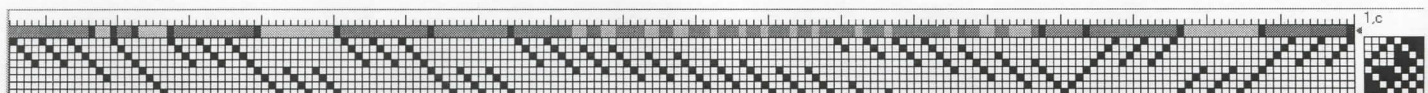
SOURCE Original
PROJECT Birds, Bugs and Butterflies

FABRIC USE CC Samples, Yardage, Clothing

Bk Bl Bk Gr Bk Tan Bk Gr

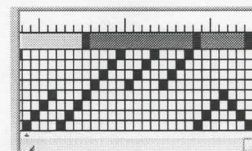
Bk = black / Bl = blue / Gr = Green T = Tan





24 threads to balance

TREADLING as drawn in



212 ends,
one repeat

WARP Size 10/2 / 8/2 / 60/2 / 20/2

Fiber 10/2 Cotton / 8/2 Tencel / 60/2 silk / 20/2 silk

Color Black Cotton / Olive and Teal Tencel / Green and Blue Silk / Tan 2 shades

Source Halcyon, Webs, Robin and Russ, and Red Fish Dyeworks

WEFT: Size 60/2

Fiber Silk

Color Dark Green, Medium Brown, Dark Brown and green

Source Robin and Russ and stash

WARP and WEFT SEQUENCE: (if applicable) warp sequence see threading

REED 15 SETT 30 epi SLEY 2 pd

ENDS/repeat Total 212 x 3 repeats + 24 ends to balance; repeats are not exactly the same

25 ppi

Ends to Balance 24 ends

FINISHING DETAILS

Soaked in warm water with soap, rinsed and spun dried, hung to further dry, and pressed with iron.

SHRINKAGE ~1 % width ~1% length

COMMENTS of INTEREST

This was not an easy warp and it took a lot of patience. Silk threads were carried along with the green and most of the blue tencel yarns. Two tan yarns were treated as one and a black thread was used to separate the change in colors. As I usually do, I warped front to back so I can do color placement design in the reed based on the drawdown. Each color was wound and sleyed separately, the two greens and two blues each warped together. I tied the combined tencel/silk threads together at one end, since sleying 2 ends (total of 4) per dent, I needed to make sure I was selected the right combo when threading. Once on the loom, the weaving was a dream using a 60/2 weft, giving a nice drape with the closely spaced warp. The source was an original, combining twill and network areas. The next samples might be a single color 😊

PERSONAL DESIGN INSPIRATION

Starting with a peacock feather and a draft I had earlier created, but never used, *Peacock 3 Shades* was produced. I put on extra yardage thinking it might meet the standards of the yardage category for Complexity 2020. For the samples, I wove with a green, the same 60/2 green I had carried along with the green tencel in the warp. For the Complexity yardage, I used 3 shades of 60/2 which brought out the design that you see in the drawdown. As is my usual mode of work, I haven't design the final garment. Using more than one color in the weft, adds to the creative possibilities in the final garment, which most likely will be combined with some wet felting.