

## *Cross Country Weavers*

NAME Leslie Killeen  
ADDRESS PO Box 2508

Durham, NC 27715  
PHONE 919-490-6335  
FAX

Email lkilleen@pughkilleen.com  
Date March 2012  
LOOM Schacht Baby Wolf with comby  
DESIGN SOFTWARE Fiberworks PCW  
(if applicable)

WEAVE STRUCTURE/TECHNIQUE  
Straight Twill threading /network and twill  
treadling

SOURCE Color placement original

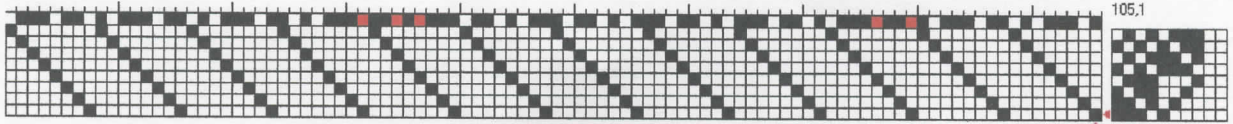
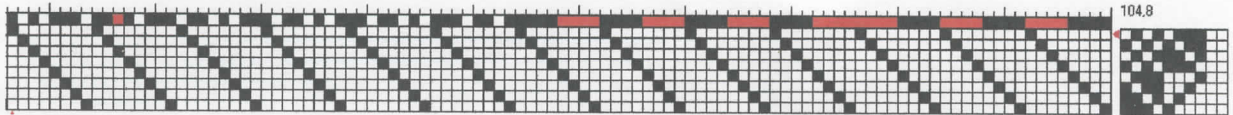
PROJECT Black and white and one color

FABRIC USE Samples and vest





See separate sheet for full drawdown



WARP: Size 10/2  
 Fiber Pearl Cotton and Tencel  
 Color Black, White, Red  
 Source Halcyon , UKI

WEFT: Size 10/2  
 Fiber Pearl Cotton  
 Color Black  
 Source Halcyon



WARP and WEFT SEQUENCE: (if applicable) warp - see above in threading

REED 15            SETT 30 epi    SLEY 2 epd  
 ENDS/repeat 200 for color repeat

Ends to Balance

**FINISHING DETAILS**

Washed on gentle cycle, spun dried, hung to further dry, and lightly pressed with iron.

SHRINKAGE 1% width 4% length

**COMMENTS of INTEREST**

This became a color and weave exercise leading to the design for the samples. As I often do, I start with a draw down, play with the tie-up, and use a variety of treadling variations. I started with a network treadling, adding a few straight twill additions. Not until woven, do you get the real feel of what will happen, but the color drawdown gives you a sense. I made three separate warps, one for each color. This was a good situation to warp front to back, placing the threads in the reed based on the final design. Using two threads per dent, I did first the black threads, then white and then red. Once the black threads were in place, it went quite fast. As did the threading, being a straight draw and just having to check whether it was to be white/black or black/white. The reds always came in pairs.

Though there are lots of black and white designs, often they have the shadows of grey to make them more interesting. Part of what I was trying to accomplish was to get the sense of grey with the white and black placement. I also saw in the drawdown, a 3 D appearance with the black stripes. I increased the number of red threads to add more interest as well as adding variation in the treadling beyond the network treadling. I included the black and white drawdown, so you could see the starting place with no color. This was an interesting exercise.

**PERSONAL DESIGN INSPIRATION** black and white from trips to the zoo—zebras/pandas and red from trips to China, having bought a piece of fabric which may be used with the left over from the samples.

Network Treadling (sequence, not treadles raised )	Twill Treadling (sequence, not treadles raised )
123456	12345678
34567	5678
45678	5678
5678	1234
5678	1234
5678	1234
5678	12345678
5678	5678
567	5678
4567	5678
456	
3456	
345	
234	



